

# PCI DSS

CONTINUOUS COMPLIANCE MONITORING

## PROTECTING PAYMENT CARD DATA FROM CYBERCRIMINALS IS A 24X7 JOB

More than **707 MILLION**

records containing online credentials, personally identifiable information (PII), and stolen card data, were compromised in 2015. \*

**54%**

of surveyed IT professionals said their companies had a data breach involving payment data an average of four times in the past two years. \*

## CYBERCRIMINALS WANT YOUR ORGANISATION'S PAYMENT CARD DATA

**89%** of breaches had a financial or espionage motive. \*

Average estimated price per stolen credit or debit card\*: \*

UNITED STATES



£3-£20 / \$5-\$30

UNITED KINGDOM



£15-£25 / \$20-\$35

CANADA



£15-£30 / \$20-\$40

AUSTRALIA



£16-£30 / \$21-\$40

EUROPEAN UNION



£19-£34 / \$25-\$45

\*monetary values in GBP and USD

## TOP PCI DSS CHALLENGES

### No comprehensive view of card data environment \*

**55%** of IT professionals surveyed said they did not know where all their payment data is stored or located.

**80%** considered this either a high risk or a very high risk to their organisation.

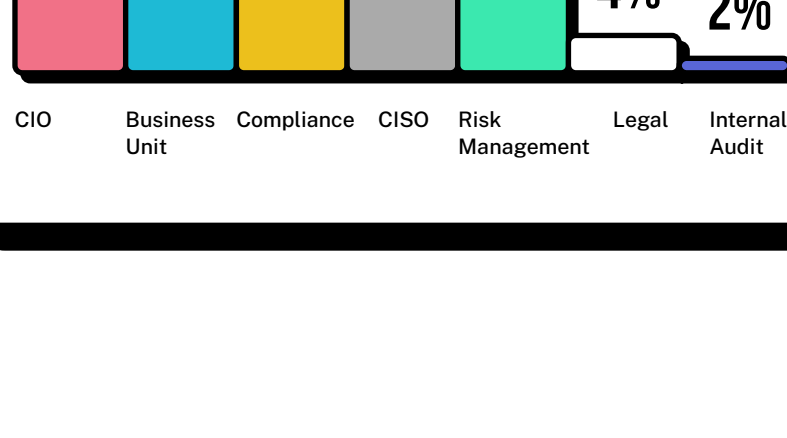
### Time to compromise and exfiltrate is very fast \*

**99%** of cases in the retail sector had systems compromised in hours.

In over **98%** of incidents, exfiltration was also rapid - data was stolen in days or less.

In **79%** of cases, it took retail organisations weeks or more to discover a breach had occurred. And in 16% of cases, discovery took months or more.

### Disparate ownership of payment data security \*



### Confidence in current security technologies is low \*

Less than **50%** of companies around the world feel the security technologies they have in place to protect payment data are effective.

## ACHIEVING COMPLIANCE IS DIFFICULT

**74%** of IT professionals surveyed said their companies are either not fully PCI DSS compliant (38%) or are only partially compliant (36%). \*

## MAINTAINING COMPLIANCE IS EVEN MORE DIFFICULT \*

**80%**

of companies that passed their annual assessment failed a subsequent interim assessment, which indicates that they've failed to sustain the security controls they put in place.

**0%**

of organisations with payment breaches that were investigated by Verizon were PCI DSS compliant at time of breach.

## ADOPT A CONTINUOUS COMPLIANCE MINDSET

Pivotal's Security Managed IT Solution utilises Tenable SecurityCenter Continuous View to:

- Proactively monitor and maintain your PCI compliance posture
- Continuously measure PCI compliance program effectiveness
- Demonstrate that your approach to PCI compliance adheres to the PCI DSS "business as usual" standard.

## QUICKLY ASSESS YOURSELF AGAINST PCI REQUIREMENTS WHEN YOU NEED IT MOST

### VISIBILITY

Track and efficiently manage assets across your entire PCI DSS cardholder data environment (CDE) from a central location using a unique combination of active scanning, agent scanning, intelligent connectors, continuous listening and host data monitoring.

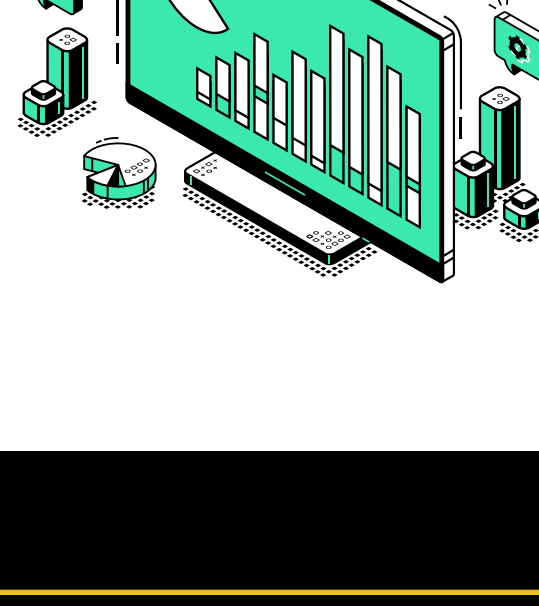


### CONTEXT

Measure and communicate the status of security program investments within the context of your PCI compliance program using business terms that IT security leaders and the business understand.

### ACTION

Continuously monitor more than 75% of PCI DSS technical controls, enabling you to quickly identify when you are drifting out of compliance so you can take immediate action.



MAKE PCI COMPLIANCE "BUSINESS AS USUAL."

### Sources :

- Breach Level Index 2015 Annual Report. February 26, 2016
- Global Study on the State of Payment Data Security Ponemon Institute. January 2016
- Verizon Data Breach Investigations report. April 2016
- The Hidden Data Economy: The Marketplace of Stolen Digital Information, McAfee labs, October 2015
- Data Security in the evolving Payments Ecosystem, Ponemon Institute. April 2015
- Verizon 2015 PCI Compliance Report. March 2015
- Global Study on the State of Payment Data Security Ponemon Institute. January 2016
- Verizon Data Breach Investigations report. April 2016
- Global Study on the State of Payment Data Security Ponemon Institute. January 2016
- Verizon Data Breach Investigations report. April 2016
- Global Study on the State of Payment Data Security Ponemon Institute. January 2016
- Global Study on the State of Payment Data Security Ponemon Institute. January 2016
- Global Study on the State of Payment Data Security Ponemon Institute. January 2016
- Verizon 2015 PCI Compliance Report. March 2015